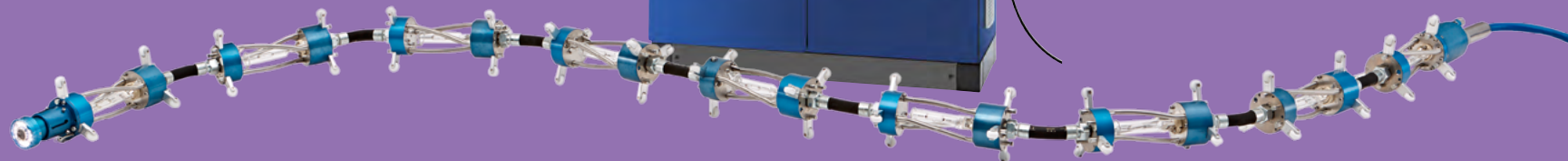




UV technology



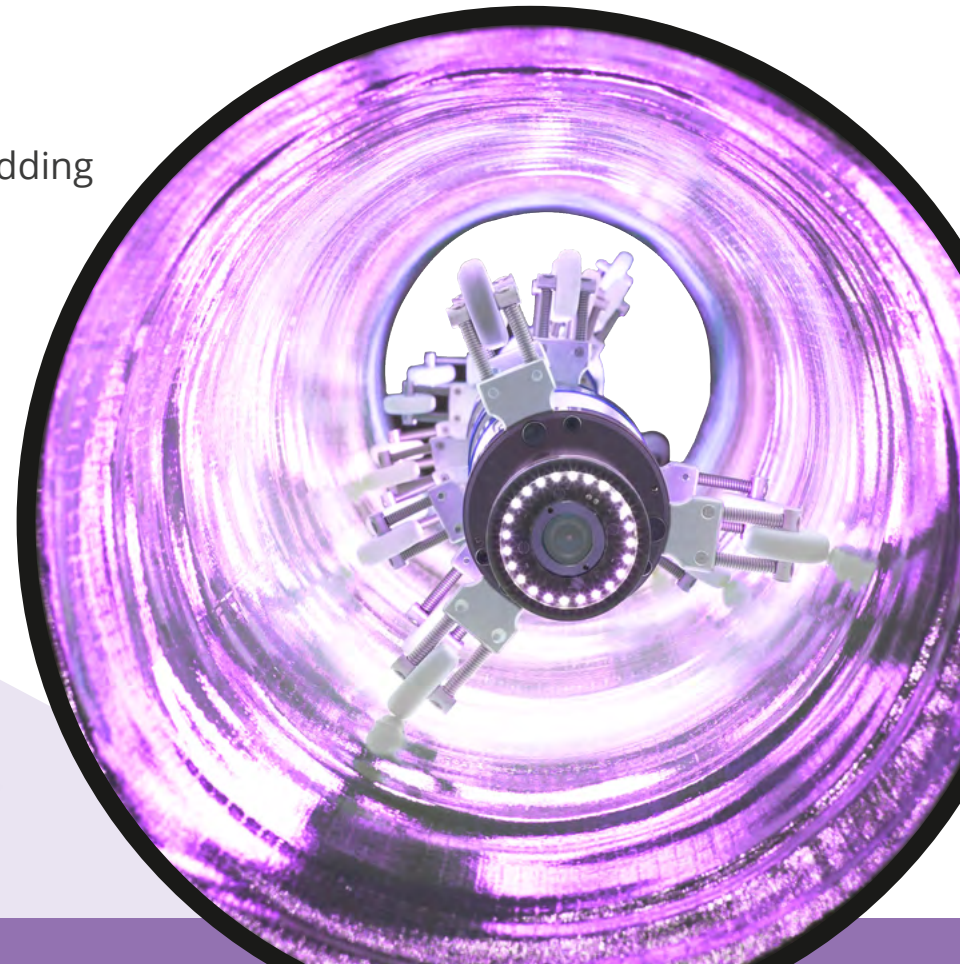
Advantages of UV light curing

- + Short installation process (usually 1 working day)
- + Curing only starts with UV light exposure
- + Less noise and emissions on the construction site
- + 6 months durability of the liner
- + High stability of the liner
- + No need for on-site water boilers or steam generators.
- + Less reduction of the main pipe diameter due to the thinner liner
- + Lower weight and lower resin consumption due to thinner liner
- + Dimensions up to DN 1800 possible



Advantages of the I.S.T. technique

- + 30 years of experience in UV technology
- + I.S.T. development team originally invented UV technology
- + In-house control and documentation software with video embedding
- + Curing data with video link
- + Remote maintenance via WIFI
- + Booster technology for subsequent performance boosting
- + Various light sources (cores, chains)
- + Mobile or truck installation



Equipped for all tasks

+ Different devices for different applications



STARLIGHT



Power LIGHT Compact



Power LIGHT Pro



VIOLIGHT



STARLIGHT

Your mobile companion for small main sewers

Field of application of the STARLIGHT

- + Pipes and sewers from DN 70 to DN 500
- + Optimal for small main sewers and poorly accessible supports
- + Can also be used for house connections
- + Compact UV system for mobile use
- + Transportable in a Sprinter or completely installed in a 3.5 - 5 T mini-van
- + Power supply by house current
- + Optional accessories for UV short liner rehabilitation



Advantages of the STARLIGHT system

- + Mobile UV system
- + Optimal price-performance ratio
- + Modular system with four UV light sources
- + Small, mobile system completely installed in the 3.5 T, Power via alternator or small generator
- + Small blower
- + Same control and documentation software as in the PowerLIGHT system
- + Perfect combination of equipment and consumables
- + Bonding to old pipe possible with felt liners
- + Close-fit installation
- + Cable lengths 60 m and 90 m
- + Optional accessories for UV short liner rehabilitation



Technical data

- + Siemens HMI-Touchdisplay
- + Remote maintenance
- + Same PLC (Programmable logic controller) as in the PowerLIGHT system



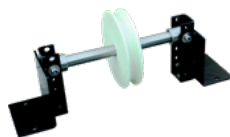
STARLIGHT UV

Field of application:	DN 70 – DN 500
Power::	175 W up to max. 1600 W
Cable lengths:	60 m or 90 m
Dimensions:	800 mm x 610 mm x 1260 mm (LxBxH)
Weight:	90 kg – 150 kg*
Power supply:	230 V 60 / 50 Hz 16 A
Power supply int.:	110 / 240 V 60 / 50 Hz 30 A / 16 A
Available light sources:	2 x 175 W, 1 x 300 W, 2 x 300 W, 4 x 400 W

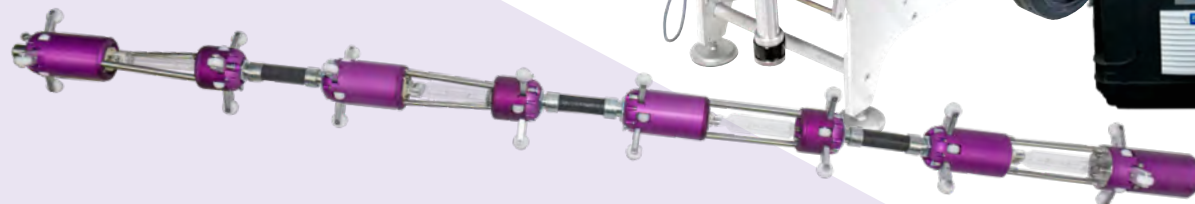
* Dependent on configuration

Your starter UV set for small main sewers

- + STARLIGHT basic unit
- + Starter Kit
- + Light chain 4 x 400 W
- + Booster 4 x 400 W
- + Cable drum 90 m
- + End caps DN 150 - DN 350
- + End caps DN 400 / 500
- + Spare parts kit light chain 4 x 400 W
- + Deflection rollers kit
- + Repair kit ITZ plug cable reel



**READY-TO-WORK SET ALSO
AVAILABLE WITH BLOWER**



**Now available
as a mobile GRP
Mainline curing
„Ready-to-work“ set
DN 150 - DN 400**

UV light sources



Head 1	Head 2	Head 3	From DN 150
60 m cable length (drum 300 W)	60 m cable length (drum 300 W)	60 m cable length (drum 300 W)	90 m cable length (drum 400 W)
2 x 175 W power	1 x 300 W power	2 x 300 W power	4 x 400 W power
DN 70 – 150	DN 100 – DN 225	DN 100 – DN 225	DN 150 – DN 500
45° in DN 100** / 90° in DN 150**	45° in DN 150** / 90° in DN 200**	45° in DN 150** / 90° in DN 200**	max. 15°
Ø 58 mm	Ø 82 mm	Ø 82 mm	Ø 100 mm

Consumables

Hose liner

- + Main sewer: Liner of the common manufacturers usable (BKP, Saertex, Brandenburger, Impreg)
- + House connection: Tubular liners from our own production matched to STARLIGHT own production can be used (Starlight Plus, ThermoLiner Stretch, BendiLiner)



RayCure UA resin

- + Mixed ready for use
- + Excellent impregnating properties
- + Perfectly matched to the Starlight hose liners
- + Resistant to common household sewage and chemicals
- + Excellent static values
- + Installation without annular gap (close-fit)
- + Bonding with old pipe possible with felt liners



Power **LIGHT** System



PowerLIGHT - Compact 9000

The all-rounder for (almost) all range of dia



Range of diameter

DN 150 – DN 1500 (max.)



Power

9 x 400

9 x 650 W*

9 x 1000 W*



Cable length

Max. 200 m



* Booster required

PowerLIGHT - Compact Plus XT 9000

The all-rounder for (almost) all widths with more cable length



Range of diameter

DN 150 – DN 1500 (max.)



Power

9 x 400 / 650 W
9 x 1000 W*



Cable length

Max. 300 m



Configuration Compact 9000 / Plus XT 9000

Pipe diameter
DN 150 - DN 600

Pipe diameter
up to DN 1500

Pipe diameter
up to DN 1600



Front-Camera
Horizontal self-aligning

Backeye-Camera
With illumination



Light source chain
9 x 400 / 650 W
(DN 150 - DN 600)



Booster Medium
9 x 650 / 1000 W



(x4)
Light source available for DN 100



Light source chain
3 x 3 x 1000 W
(DN 650 - DN 1500)



Light source double core
2 x 4 x 1000 W
(DN 650 - DN 1200)



Only possible with Pro

PowerLIGHT - Pro 18000

The power package for maximum diameters and cable lengths



Range of diameter

DN 150 – DN 1600 (max.)



Power

9 x 400 / 650 W
9 x 1000 W
12 x 1000 W*
9 x 2000 W*



Cable length

300 m (longer cable possible on request)



* Booster required

Configuration Pro 18000

Pipe diameter
DN 150 - DN 600

Pipe diameter
up to DN 1500

Pipe diameter
up to DN 1600



Front-Camera
Horizontal self-aligning


Backeye-Camera
With lighting



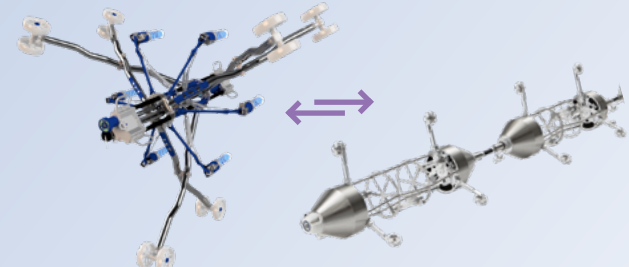
Light source chain
9 x 400 / 650 W
(DN 150 - DN 600)



Light source chain
3 x 3 x 1000 W
(DN 650 - DN 1500)




Light source double core
2 x 4 x 1000 W
(DN 650 - DN 1200)



Light source double core
Core 2 x 6 x 1000 W
(DN 1000 - DN 1600)

Light source triple core
Core 3 x 3 x 2000 W
(DN 1200 - DN 1500)
No egg-shaped profiles



Booster Maxi Pro 12 / 18
12 x 1000 W (400 V)
9 x 2000 W (230 V)
More boosters on request

Booster

Booster Medium

9 x 650 / 1000 W



Booster Maxi Pro 12 / 18

12 x 1000 W (400 V)

9 x 2000 W (230 V)



UV light sources chain

+ Various UV light sources in different power levels for pipe dimensions up to DN 1600 incl. the common egg-shaped sections



Light source chain
9 x 400 / 650 W
(DN 150 – DN 600)

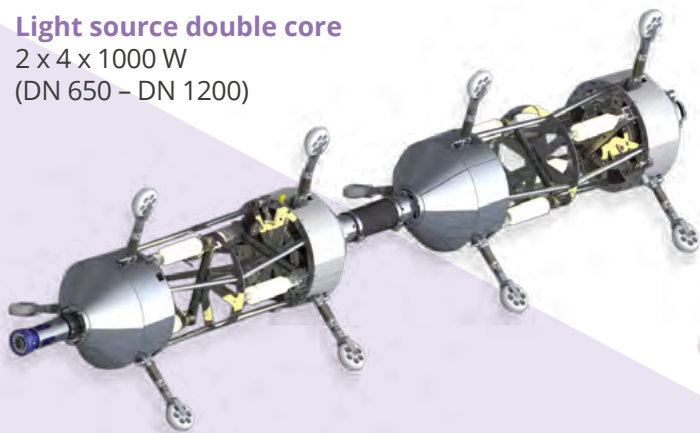


Light source chain
3 x 3 x 1000 W
(DN 650 – DN 1500)

UV light sources core

Light source double core

2 x 4 x 1000 W
(DN 650 – DN 1200)

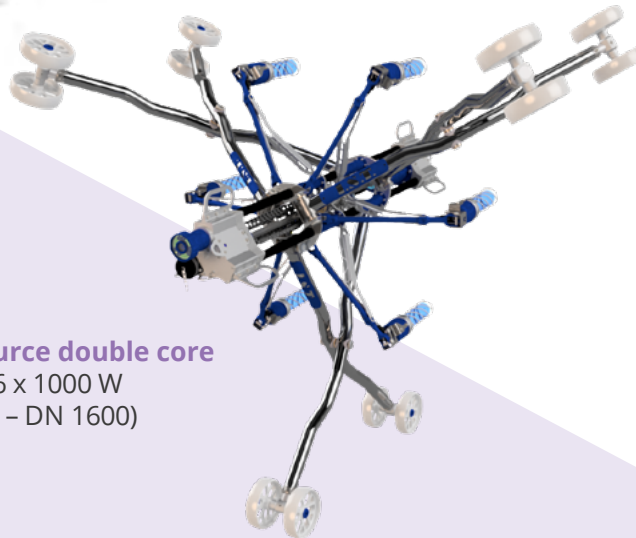


Light source triple core

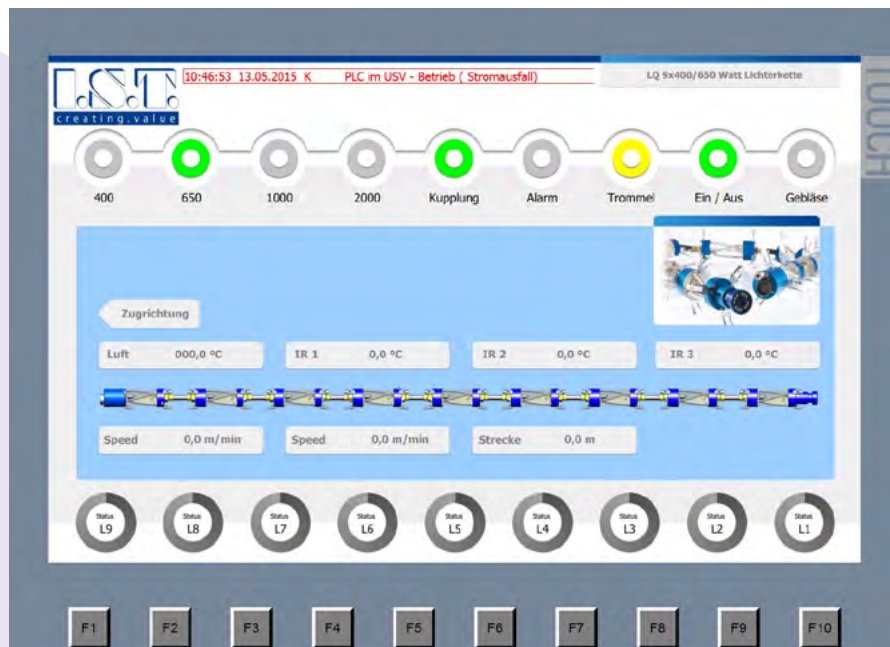
Core 3 x 3 x 2000 W
(DN 1200 – DN 1500)
No egg-shaped profiles

Light source double core

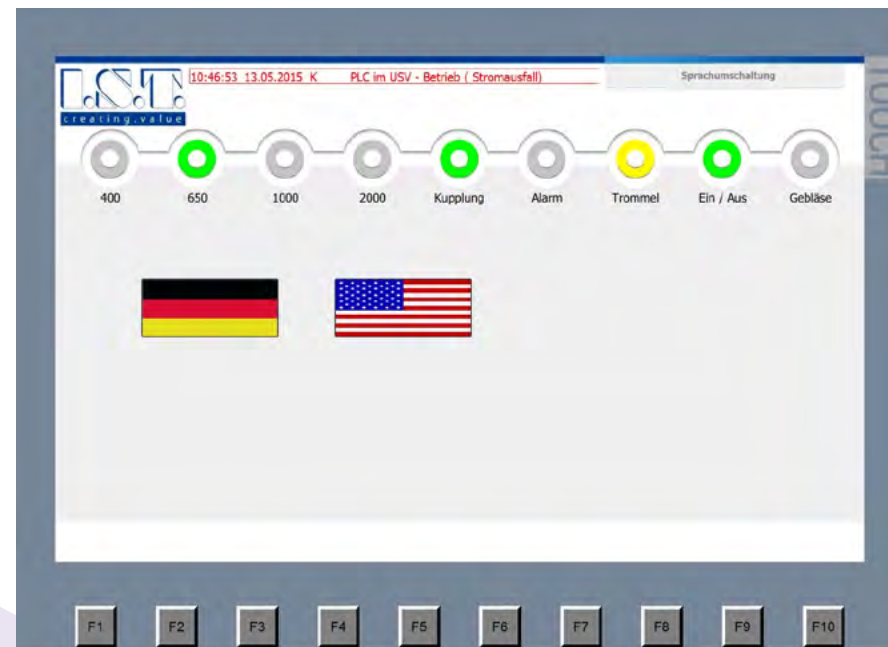
Core 2 x 6 x 1000 W
(DN 1000 – DN 1600)



Software view



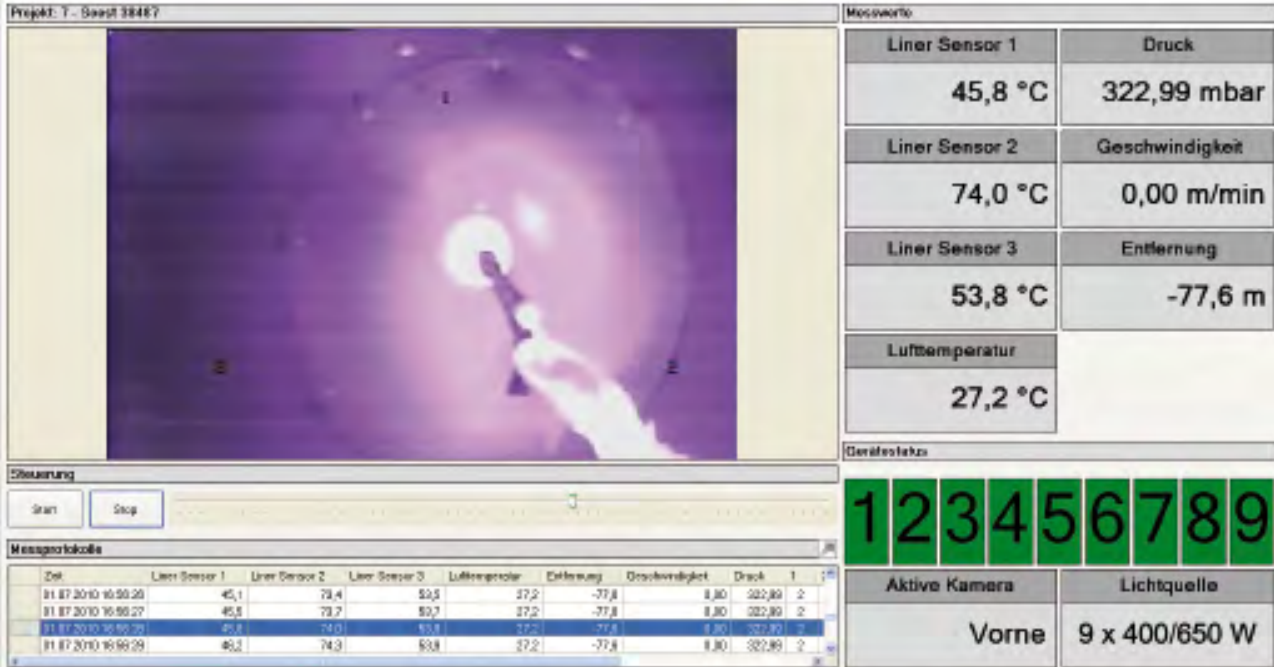
LQ 9 x 400 / 650 W light chain



Language switching

UV Doc Logging

- + Parallel data & movie recording
- + Project management
- + All data in one project
- + Video recording
- + Highest clarity
- + Excel tables
- + List logs
- + No data search
- + Line charts
- + Data export



The screenshot displays the UV Doc Logging software interface. The main window shows a live video feed of a sewer inspection, with a bright light source illuminating the interior. The interface includes a control panel with 'Start' and 'Stop' buttons, a 'Messprotokolle' (Measurement Protocols) table, and a 'Messwerte' (Measurement Values) table.

Messwerte

Liner Sensor 1	Druck
45,8 °C	322,99 mbar
Liner Sensor 2	Geschwindigkeit
74,0 °C	0,00 m/min
Liner Sensor 3	Entfernung
53,8 °C	-77,6 m
Lufttemperatur	
27,2 °C	

Messprotokolle

Zeit	Liner Sensor 1	Liner Sensor 2	Liner Sensor 3	Lufttemperatur	Entfernung	Drehwindigkeit	Druck	1
11.07.2010 10:59:20	45,1	73,4	53,5	27,2	-77,6	0,00	322,99	2
11.07.2010 10:59:27	45,8	73,7	53,7	27,2	-77,6	0,00	322,99	2
11.07.2010 10:59:29	45,8	74,0	53,8	27,2	-77,6	0,00	322,99	2
11.07.2010 10:59:29	46,2	74,3	53,8	27,2	-77,6	0,00	322,99	2

Gewässerstatus

1 2 3 4 5 6 7 8 9

Aktive Kamera: Vorne

Lichtquelle: 9 x 400/650 W

Curing cameras

Front-Camera

Horizontal self-aligning



Backeye-Camera

With lighting



Power **LIGHT** Accessorie



Starter kit

+ Everything you need for your launch:

- + Deflection rollers
- + Disposable coveralls
- + Cutter knife
- + Nitrile gloves
- + Tension straps
- + Safety goggles
- + Venturi nozzle
- + transport box
- + and much more

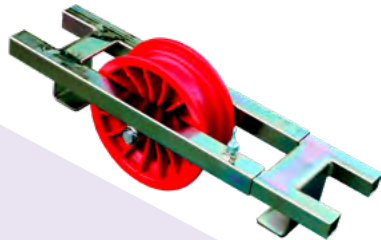


Deflection rollers

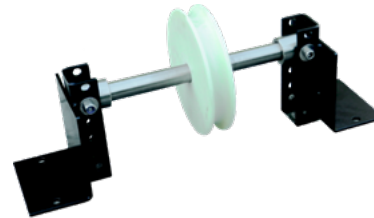
Deflection rods
for manholes



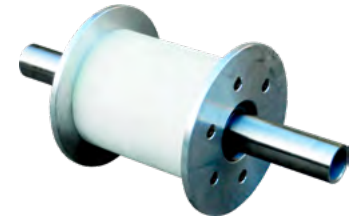
Deflection rollers
for manholes



Guide rollers
for manholes



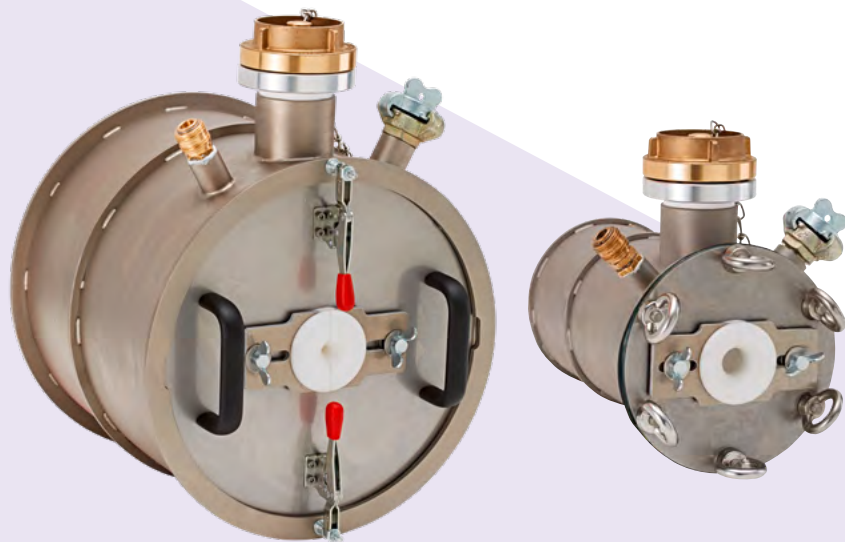
Deflection rollers
for liner insert



End caps

End caps

for circular profile cross-sections
Ø DN 150 to DN 1600



End caps

for egg-shaped sections
Ø DN 400 to DN 1200



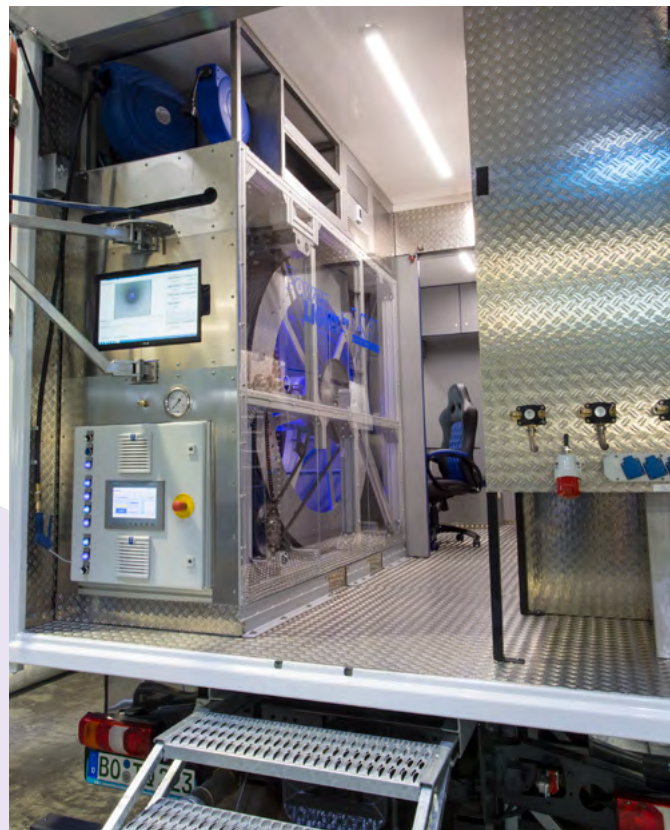
Generator & compressor



PRAMAC	GSW 35	GSW 50	GSW 67P
Continuous output:	30.5 kVA	44.0 kVA	61.0 kVA
Voltage:	400 / 230 V	400 / 230 V	400 / 230 V
Frequency:	50 Hz	50 Hz	50 Hz
Fuel:	Diesel	Diesel	Diesel
Suitable for Kaeser:	BB 89	BB 89 + CB 131 C	BB 89 + CB 131 C

KAESER	BB 52 C	BB 89	CB 131 C
Electrical connection:	400 V / 3 Ph / 50 Hz	400 V / 3 Ph / 50 Hz	400 V / 3 Ph / 50 Hz
Nominal width:	up to DN 400	up to DN 600	up to DN 1800*
Nominal motor power:	7,5 kW	15,0 kW	30,0 kW
Volume flow:	max. 2,91 m ³ /min	400 m ³ /h	666 m ³ /h
Weight:	207 kg	330 kg	642 kg
Pressure difference:	950 mbar	800 mbar	1000 mbar
Remote control:	yes (optional)	yes (optional)	yes (optional)

UV vehicle installation Pro 18000



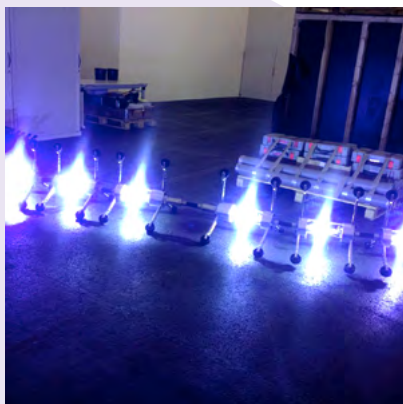
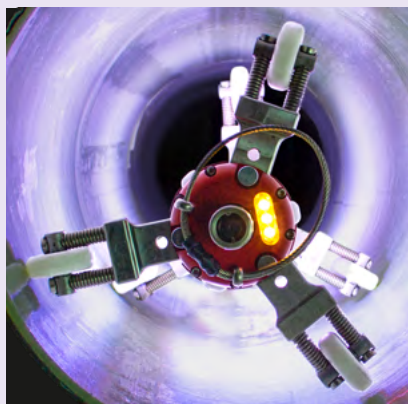
UV vehicle installation Compact Plus XT 9000



UV vehicle installation Compact 9000

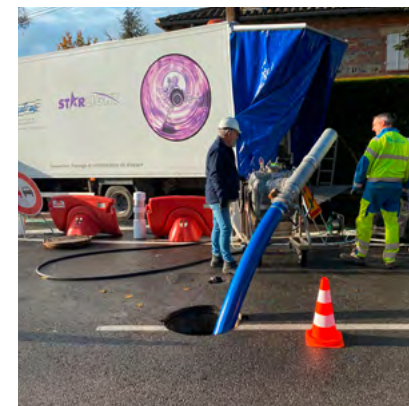
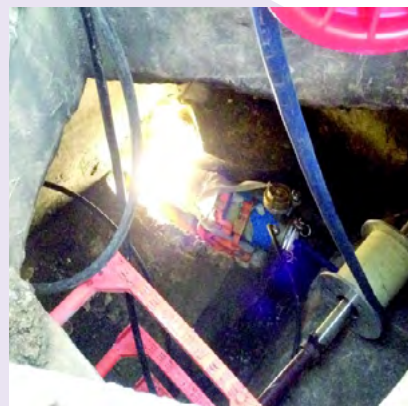
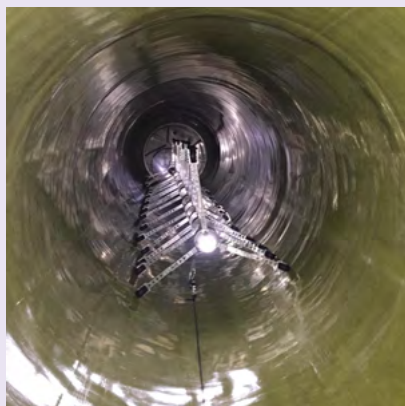
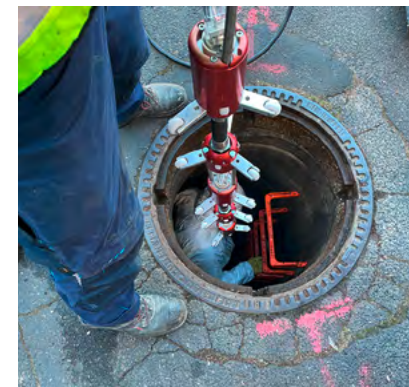


Impressions UV technology



[Click and discover](#)

Impressions construction sites





vioLIGHT

LED curing system for laterals

Technical data

- + System for LED curing
- + Only one head needed
- + Easy transport due to compact design

VIOLIGHT

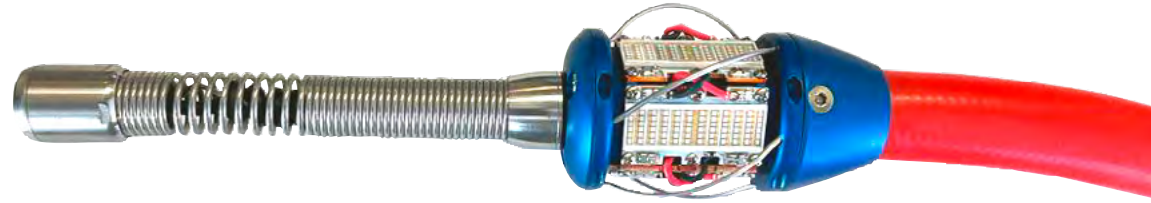
Field of application:	DN 70 – DN 300
Power:	550 W
Cable lengths:	70 m
Dimensions:	900 mm x 550 mm x 1590 mm (L x W x H)
Weight:	87 kg
Power supply:	110 – 240 V 50 – 60 Hz 4,4 A
Power supply int.:	110 – 240 V 50 – 60 Hz 4,4 A
Available light sources:	5 x 110 W



* VIOLIGHT is not available in all countries.

Advantages of VIOLIGHT

- + Pipes und sewers from DN 70 to DN 300
- + LED curing system for GRP and Felt lining
- + 5 x 110W LED lamps with quartz glass
- + 70 m Push Rod
- + Curing speed 45 m/h (DN 100)
- + Bendable 90° from DN 70
- + Extremely small LED head



Follow us

- + You always want to stay up to date?
Then follow us on our social media channels
- + Simply click on the button and network directly



Thanks for your attention

Trelleborg Sealing Profiles Germany GmbH

Rombacher Hütte 17-19
44795 Bochum

Phone +49 234 57988-0

Fax +49 234 57988-55

info@ist-web.com

www.ist-web.com



Discover our current
product catalog
[Browse online now](#)

